

# Network Version

## Print2CAD and BackToCAD Installation guide

### Introduction

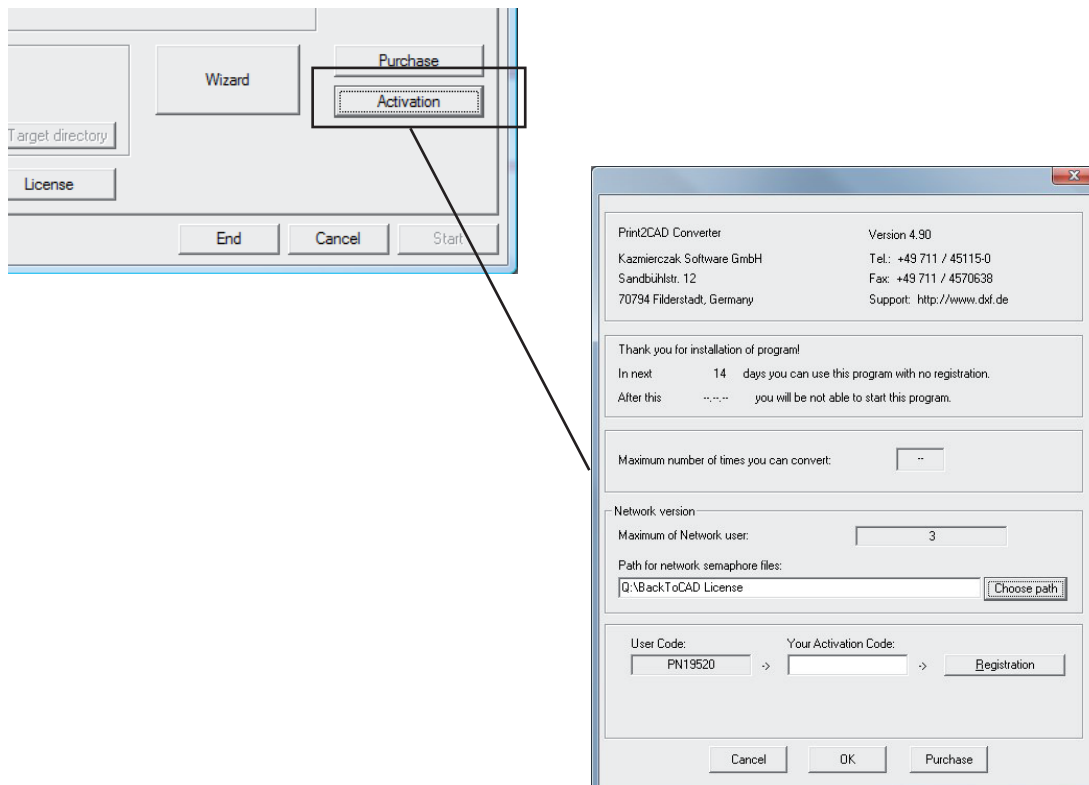
The programs of the Print2CAD or BackToCAD series can be upgraded to a network versions.

The upgrade allows you to share the software in a network (floating license).

We offer a semaphoric licensing system, which does not send any network signals or protocols (TCP/IP, IPX etc.).

Our semaphoric licensing system is based upon two very easy steps:

1. All programs have to be installed locally on workstations in your network.
2. Within your network, a common directory gets created to which every workstation has access to. As soon as one user opens the software, a blocking file, with information about the program execution, gets created in the common directory. As soon as the amount of simultaneous users gets exceeded, our system blocks the start of the software.



## Installation steps:

### Step 1:

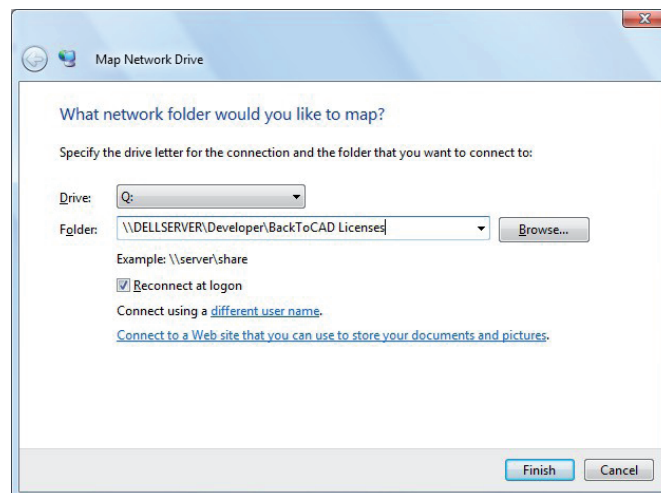
Our semaphoric licensing system can be used with every kind of network. Please decide, where you want to create the common directory. The directory can be located on every workstation in your network. It does not have to be „the server“ or „the fastest computer“, but make sure that you do not have a copy of Print2CAD or BackToCAD installed on it.

Now you can create the common directory in the location you chose. Please mind that every local software installation needs to get the same directory assigned, otherwise the activation will not be possible.

For experts: the way to use an UNC path gets explained at Step 8.

### Step 2:

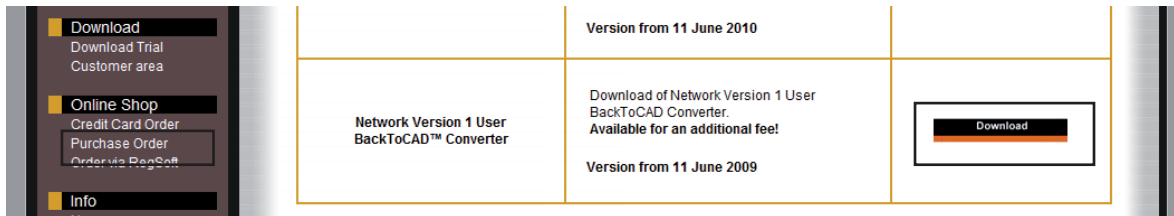
Choose a workstation in your network. Specify on this workstation the drive letter for the connection to this directory using Windows Explorer-Tool „Map Network drive ...“. In our example we map network drive \\DELLSERVER\Developer\BackToCAD License to drive letter Q:\.



**Step 3:**

Now install Print2CAD or BackToCAD network version.

The installation file can be downloaded at [www.backtocad.com](http://www.backtocad.com). The log-on for the customer area gets provided with an email that you receive after the purchase of the software.



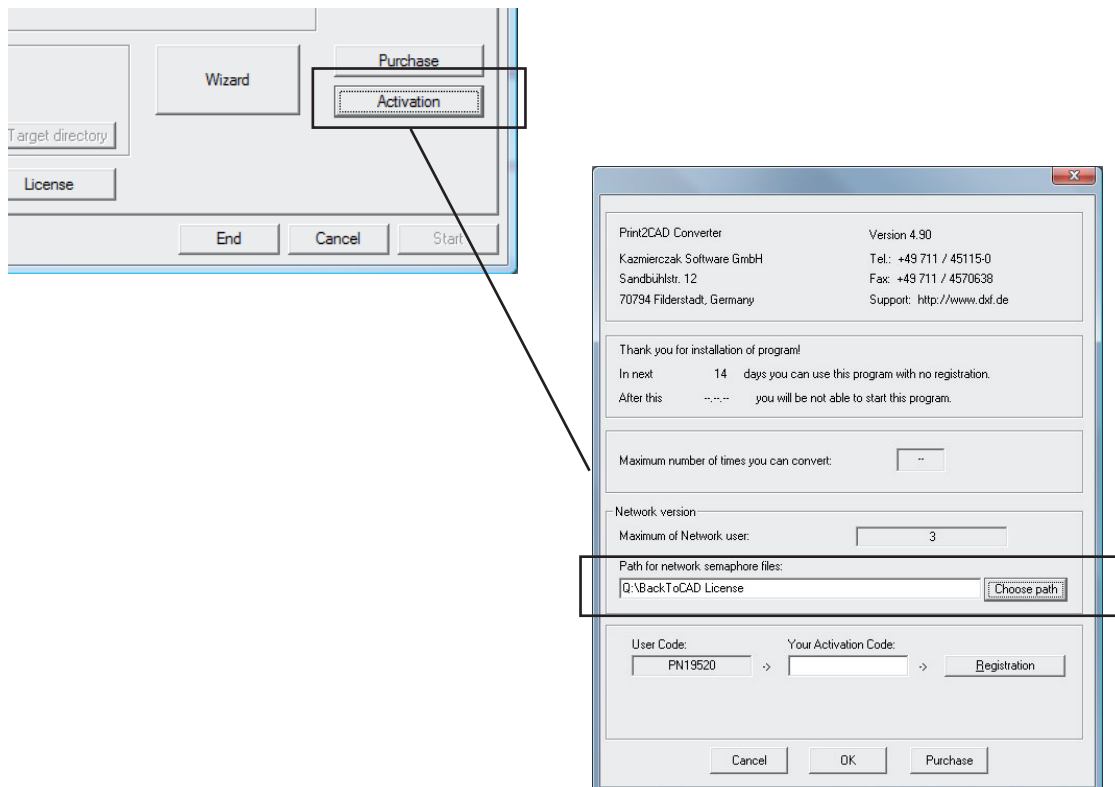
[www.BackToCAD.com](http://www.BackToCAD.com)

**Step 4:**

Please start the program Print2CAD or BackToCAD.

Click the button „Activation“ and write or select the path for the common semaphoric directory.

In our example, we write Q:\BackToCAD License

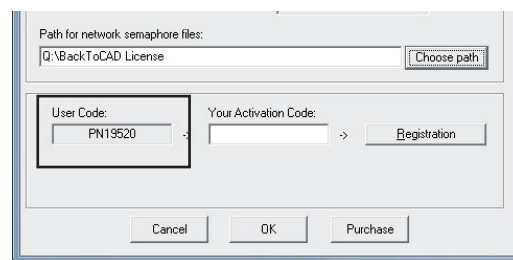


**Step 5:**

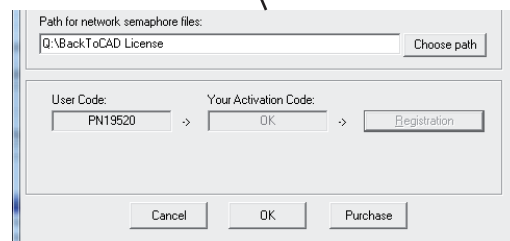
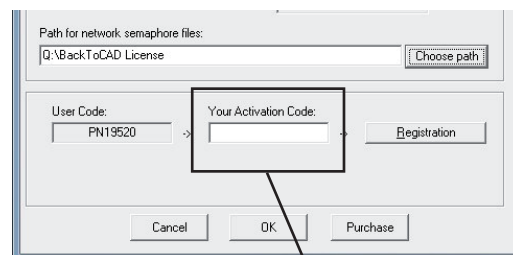
After you selected the path, the program generates your own unique „User Code“ for the network. This code is based upon network drive properties and if the same UNC path is chosen on every workstation in your network, the code will be the same for every station.

Please write this code down and send it to us via E-mail: [cad@dx.net](mailto:cad@dx.net)

You will receive your Activation Code within 24h.

**Step 6:**

After you received the Activation Code, please activate the software by putting it in the field next to the User Code.



**Step 7:**

Install Print2CAD or BackToCAD network version on every workstation in your network, map the network drive to a letter and activate the program like written in steps 2, 3, 4, 5 and 6, but without sending the User Code to us.

To activate the copies, please use the Activation Code you received, since the User Code will be the same.

**Step 8 (only for experts):**

After the activation, the software generates a file with the name p2cMMX.cod in the program directory (for example c:\Program Files\BackToCAD Converter Net 3 User).

If you use Windows Vista you will find the file here:

Desktop\User Name\AppData\Local\Virtual Store\Program Files\BackToCAD Converter Net 3 User

The file is editable and it contains a path for a common directory in your network and your Activation Code in software internal form.

You can edit the file and change the path name to UNC path if you want to (in our example \\DELLSERVER\Developer\BackToCAD License).

The file can be copied to every workstation's program directories. In this way, the different workstations do not have to be activated separately.

*Example of p2cMMX.cod file:*

92887767481823456	<---	Activation Code in software internal form
Q:\BackToCAD License	<---	Path for a common directory

*Example of changed p2cMMX.cod file:*

92887767481823456	<---	Activation Code in software internal form
\\DELLSERVER\Developer\BackToCAD License	<---	Path for a common directory